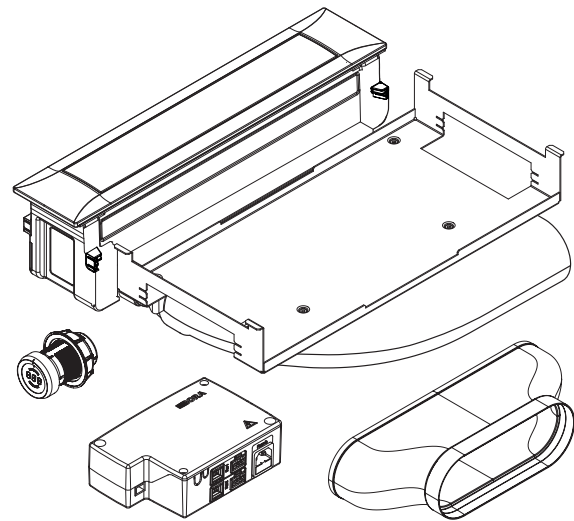
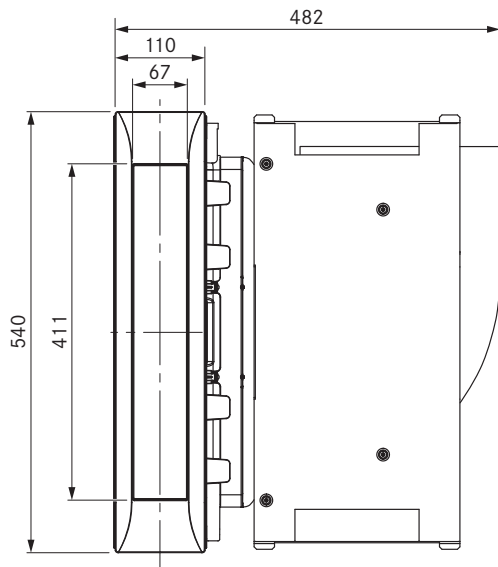
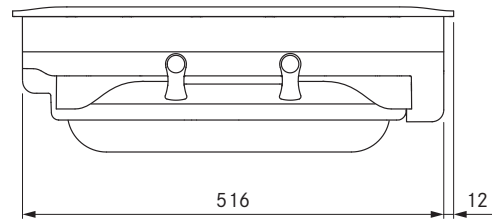
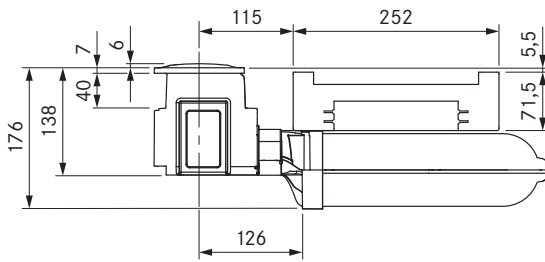


BORA cooktop extractor with curved duct element



Technical data

Supply voltage	220 - 240 V
Frequency	50/60 Hz
Maximum power consumption	700 W
Power supply cable	2 m
Dimensions (WxDxH)	482 x 540 x 176 mm
Weight (incl. accessories/package)	9.25 kg
Power levels	1 - 9, P
Connection on the exhaust side	BORA Ecotube

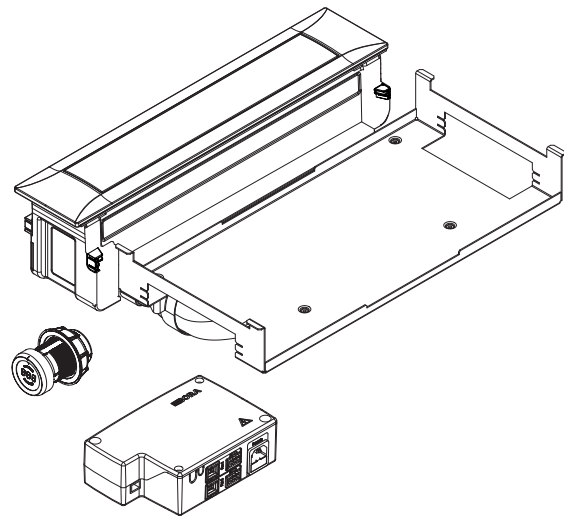
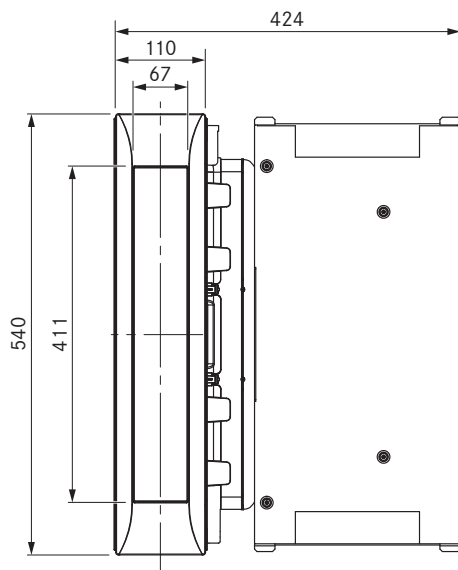
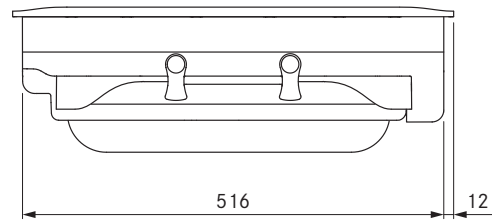
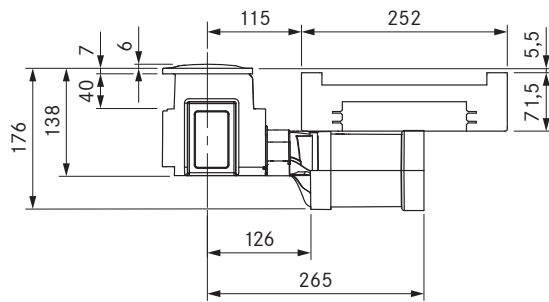
Product description

- Control knob for power control
- Power display
- Electrical cover flap
- Cover flap sensor
- Stainless steel grease filter
- Grease filter sensor
- Automatic cooktop extractor function
- Automatic after-run
- Filter service display
- Interface for external devices
- Safety shut-down
- Ability to connect two BORA Universal fan modules

Scope of delivery

- PKA cooktop extractor with integrated 90° bend
- Straight duct element
- Control knob
- Cover flap
- Stainless steel grease filter
- Filter tray
- Maintenance tray
- CAT 5 communication cable
- Universal control unit
- Interface (connection) cable between control knob and extractor
- Operating and installation instructions
- Height adjustment plate set
- Mounting clamps
- Power supply cable with type E + F plugs

Installation option: BORA cooktop extractor with straight duct element



Planning instructions

- Suitable for use as a recirculation or exhaust system
- Can be combined with all BORA Professional cooktops and BORA Universal fan modules
- In the event of an exhaust channel of more than 6 m in length or significant pressure losses, an additional Universal fan module must be used
- The worktop height can be adjusted as necessary
- Worktop depth: ≥ 700 mm (in conjunction with the straight duct element ≥ 650 mm)
- Airflow possible to the right or left
- Fan can be positioned in the plinth area as a result of the low installation height (100 mm) (when using the ULS plinth fan only)
- Installation type: flush or surface-mounted
- Universal control unit as central connection point can be simply and compactly positioned in the plinth area
- The extractor and Universal control unit are connected by a CAT 5 communication cable
- The drawers and/or shelves in the floor unit must be removable for maintenance and cleaning purposes
- The BORA Ecotube duct system is optimally tailored to the BORA cooktop extractors and guarantees 100% functionality and optimum performance
- When using the straight duct element, a BORA Ecotube EFD shallow seal is additionally required
- Professional cooktop extractor system can be combined with USTF, USTE, USTJ, USTG and USTL sockets

Accessories

- PKA1FF stainless steel grease filter
- PKA1VK cover flap
- PKA1FW filter tray
- UNLI type I power supply cable (AUS)
- UNLJ type J power supply cable (CH)
- UNLG type G power supply cable (GB-IE)

Device dimensions for the Universal control unit:

